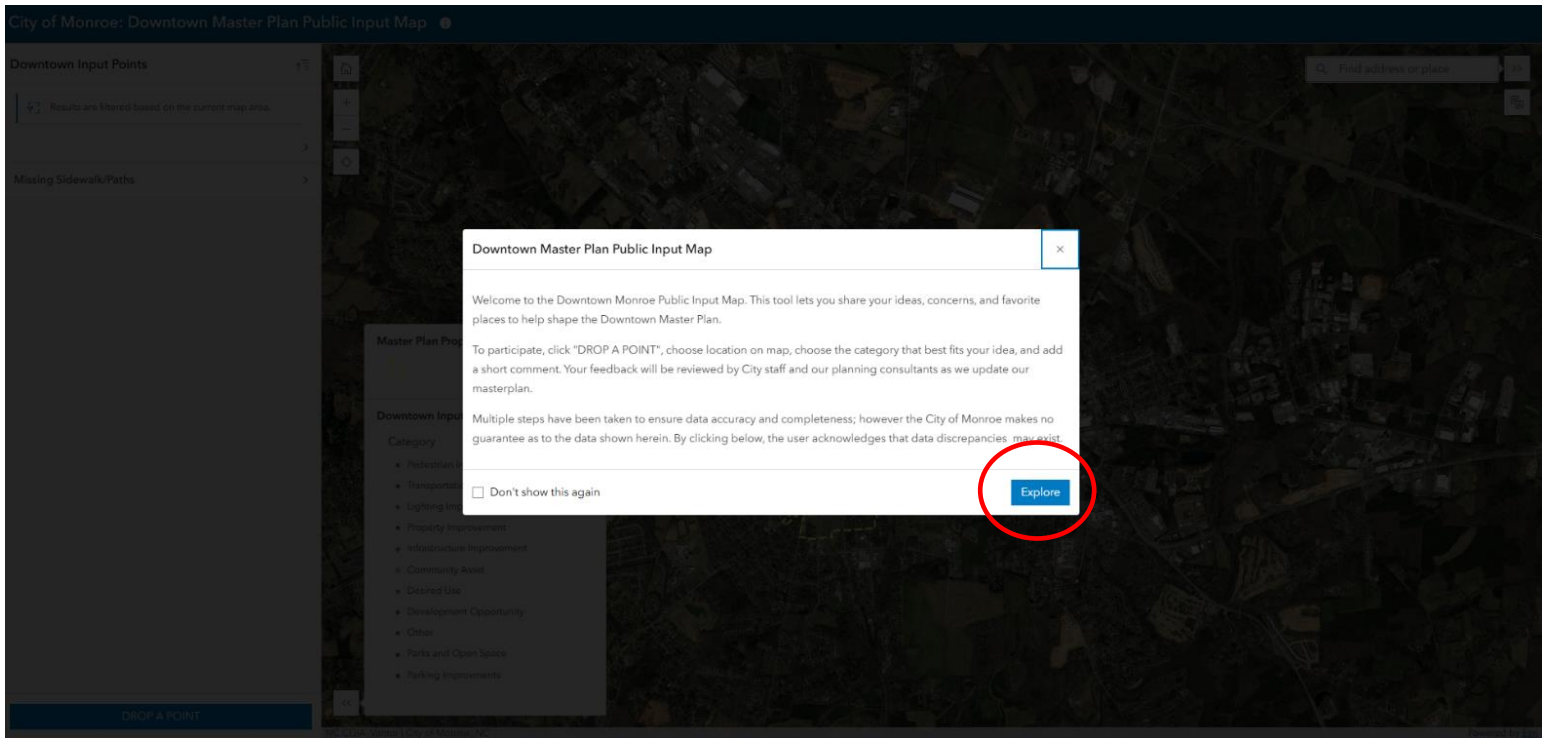


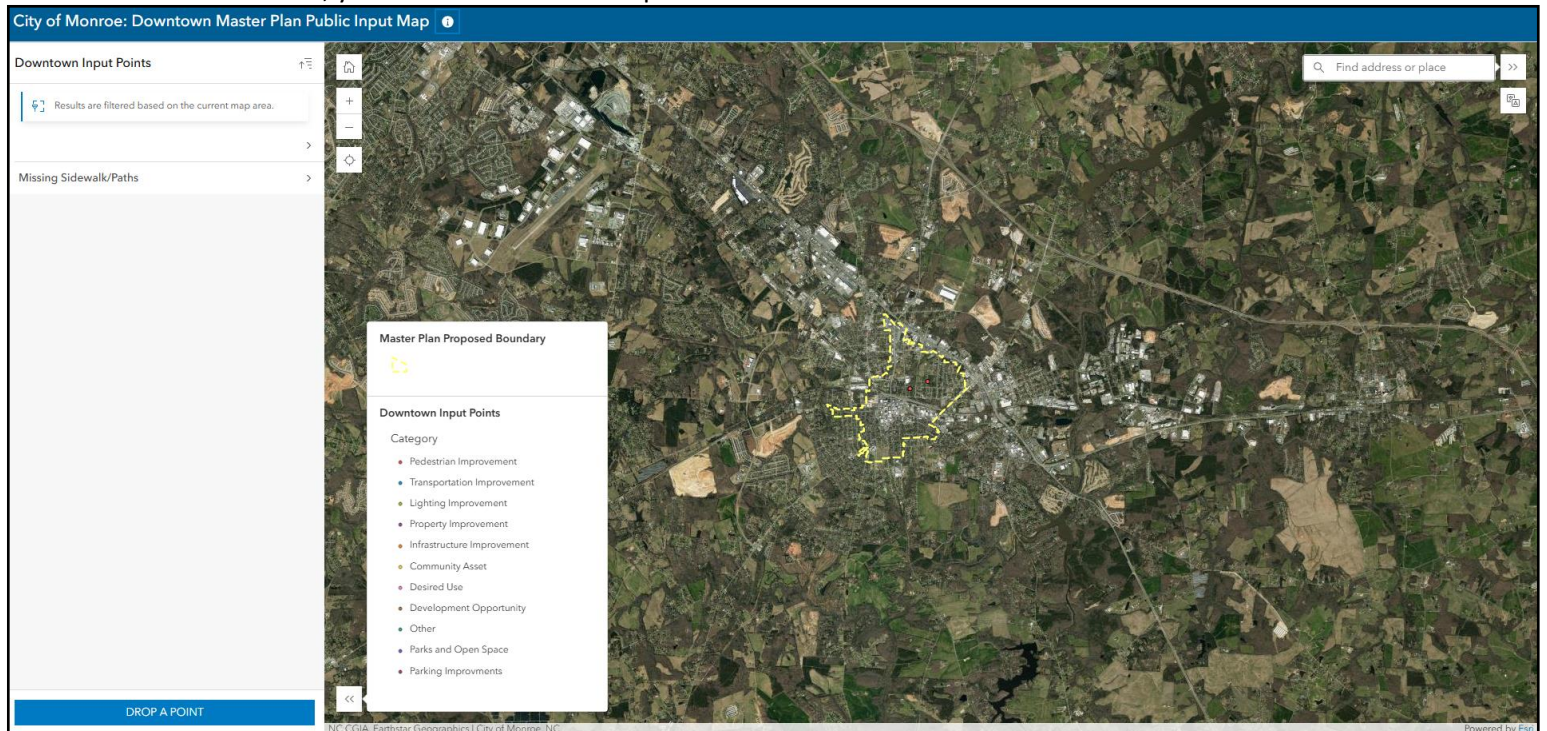
City of Monroe Downtown Master Plan Public Input Directions

1. Upon opening the DTMP public input map, you'll be met with a splash screen, left click

[Explore](#)



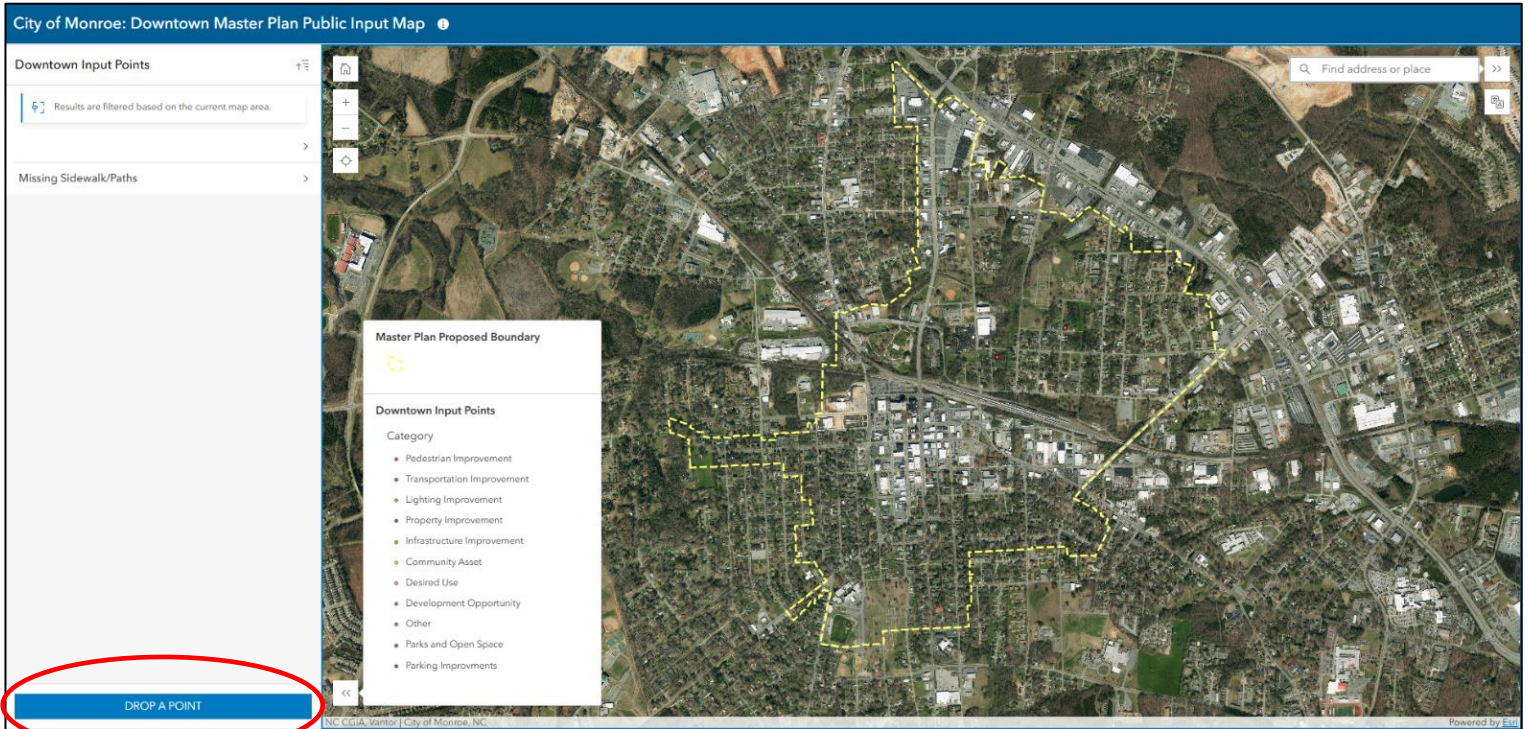
2. Once inside, you'll be met with the map home screen.



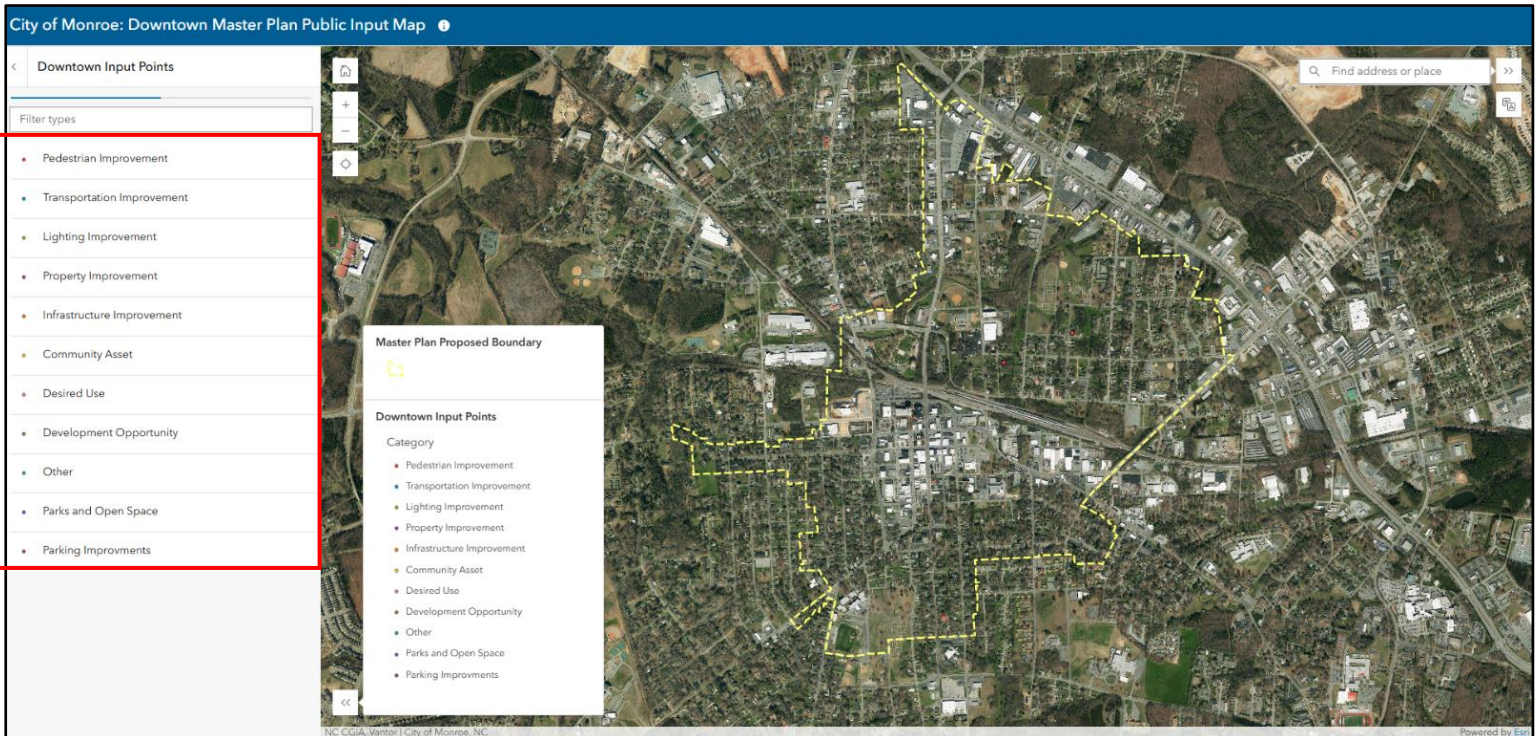
3. To drop a point, left click

DROP A POINT

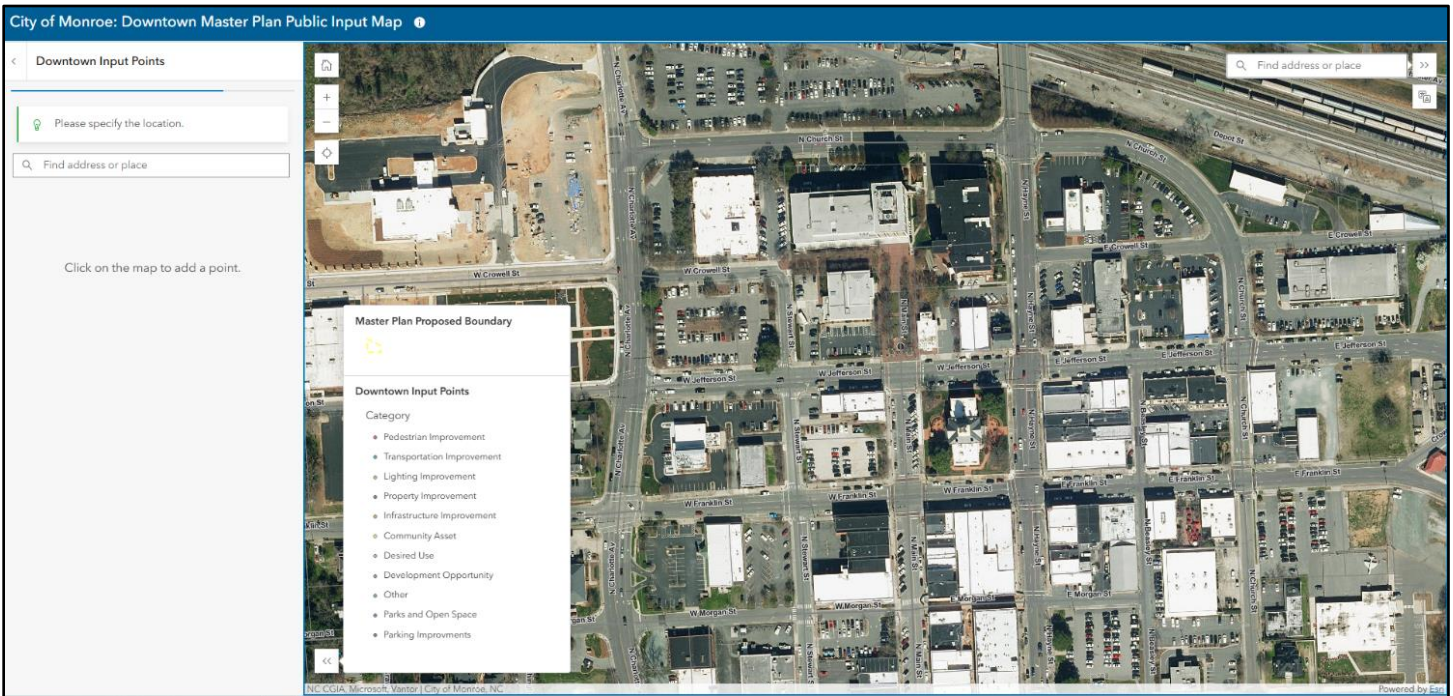
in the bottom left of the screen.



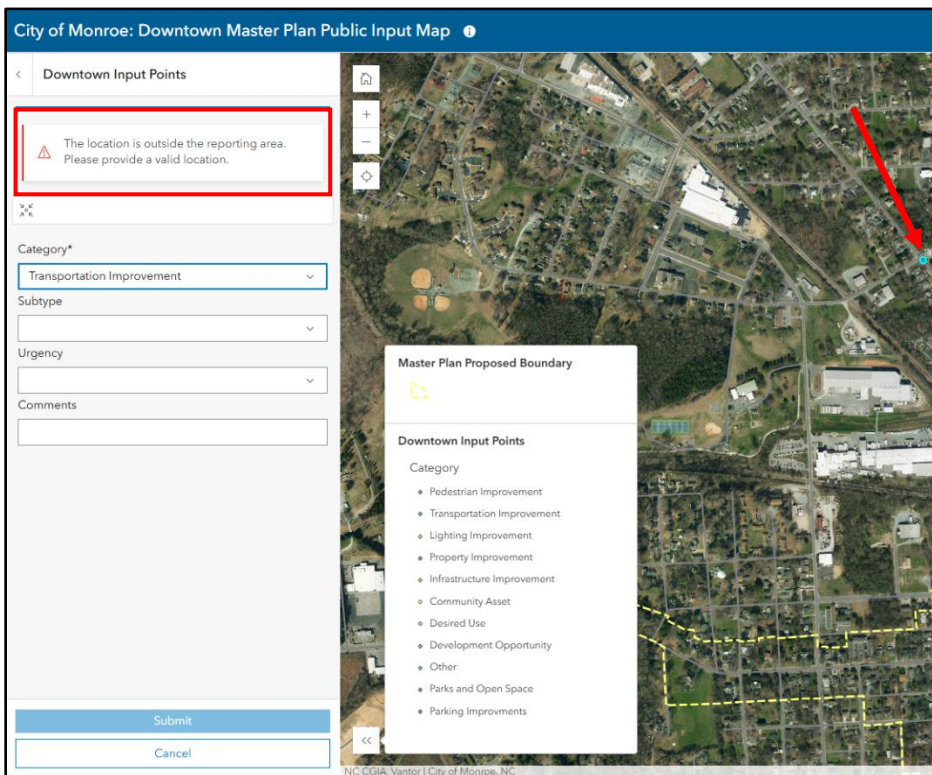
4. Left click your improvement type from the selection list on the left.



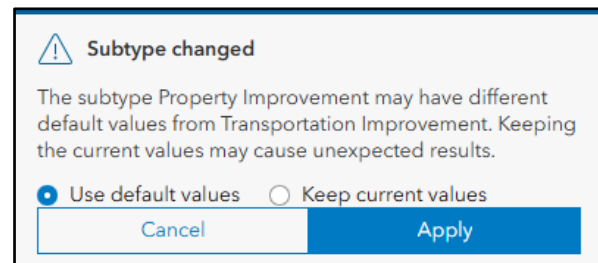
5. Click anywhere on the map within the Downtown Boundary.



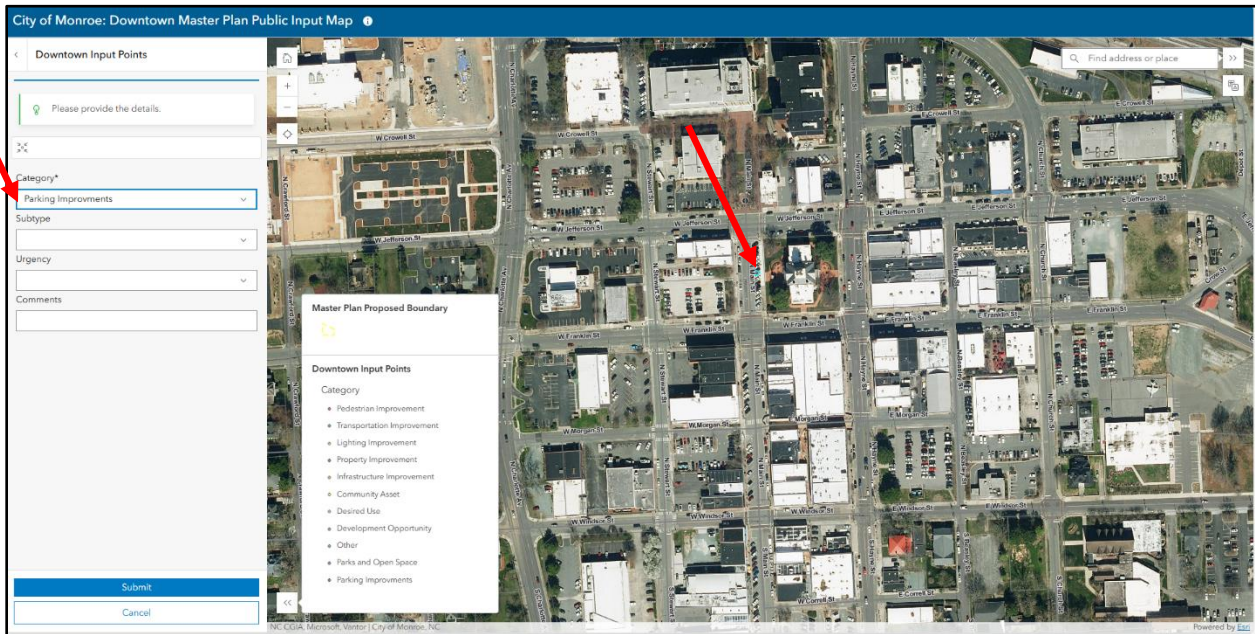
(Common Error)- Point Placed Outside Downtown Boundary



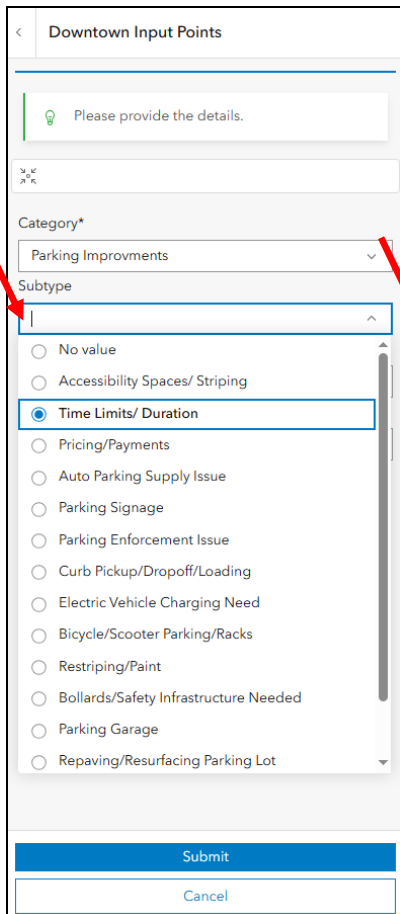
(Common Error)- Category changed after point has been placed. Right click apply with "Use default values" selected



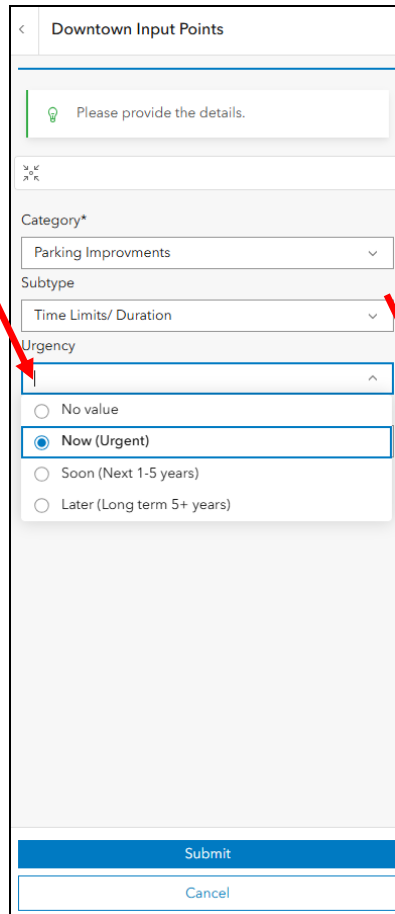
6. Once your Input point is placed within the correct area, fill out details using drop down menus.



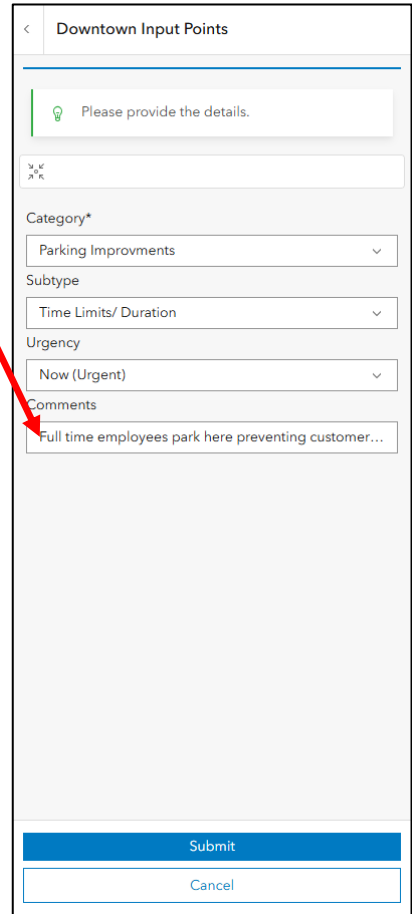
7. Select a subtype



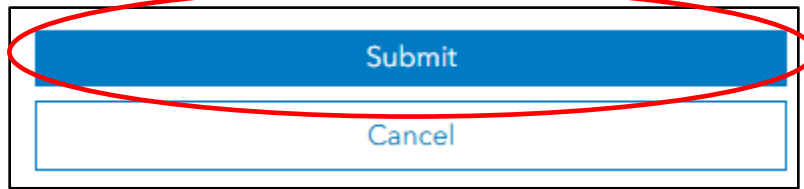
8. Select Level of Urgency



9. Leave a descriptive comment



10. Right click submit finalize/save your point.



***After Step 10, map will reset to Step 2- ready to enter another input point!**